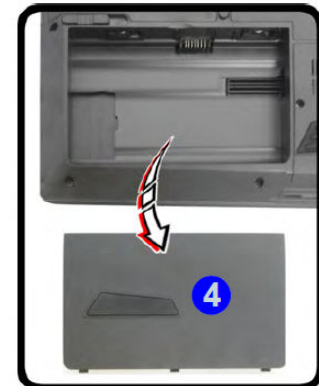
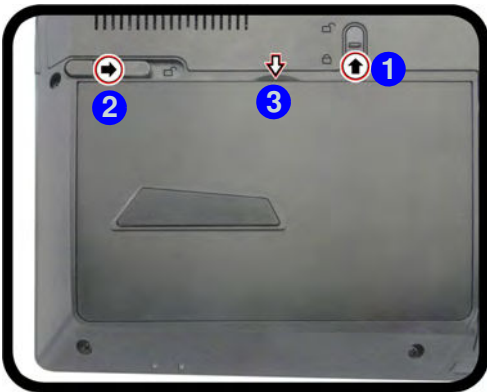


Figure 1 - 17:
**Battery
Removal and
installation**

Battery Removal & Insertion

If you do need to remove the battery for any reason (e.g. long term storage) see below. In addition you will need to remove the battery in order to insert the USIM card.

1. Turn the computer **off**, and turn it over.
2. Slide the latch **1** in the direction of the arrow.
3. Slide the latch **2** in the direction of the arrow and the battery will pop up to be released.
4. Lift the battery up from the groove at point **3**.



5. Remove the battery from the bay **4**.
6. To install, reverse the process.